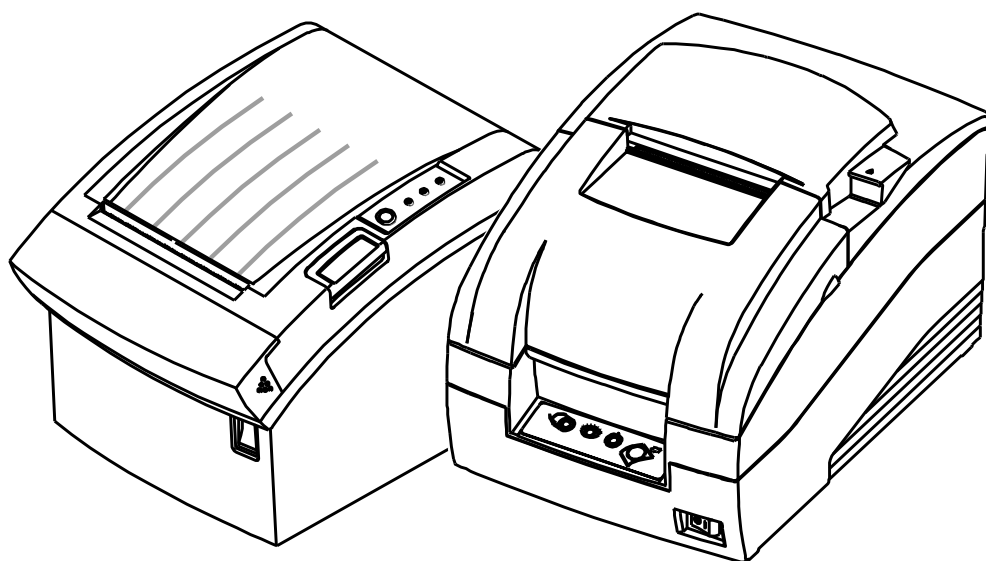


BIXOLON®

Setup Utility Guide
OPOS Driver

Rev. 3.02



<http://www.bixolon.com>

Introduction

This is a manual about how to register and configure POSPrinter, LineDisplay, MSR, Label Printer produced by BIXOLON with BIXOLON OPOS Driver

[Further Source]

OLE for Retail POS committee available from <http://monroecs.com/opos.htm>

Driver Update from <http://www.bixolon.com>

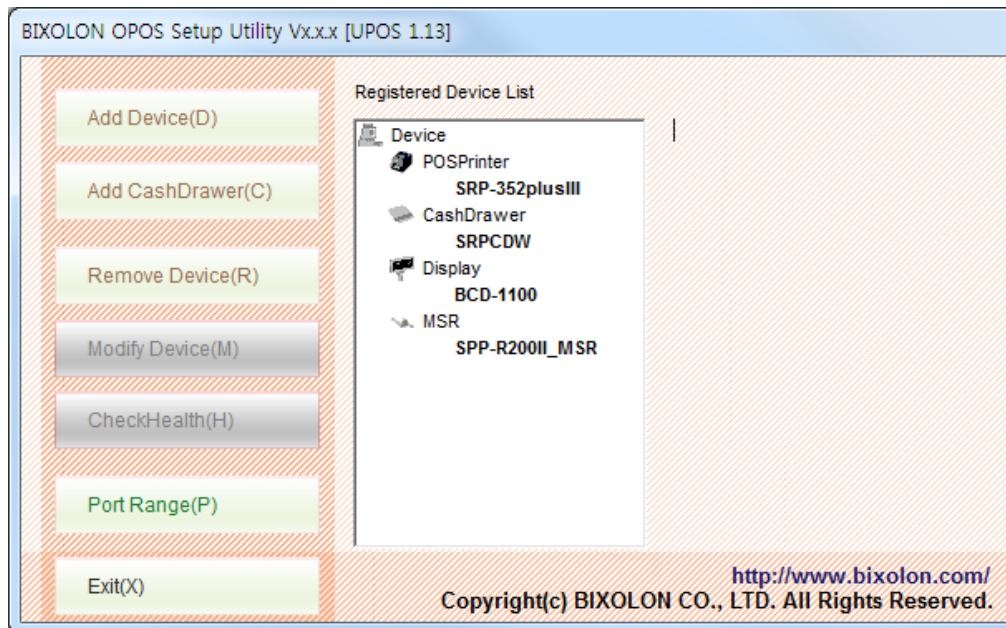
Table of Contents

| | |
|-------------------------------------|----------|
| 1. BIXOLON OPOS Setup..... | 6 |
| 1-1 POSPrinter Registration | 7 |
| 1-2 CashDrawer Registration | 10 |
| 1-3 LineDisplay Registration..... | 12 |
| 1-4 MSR Registration | 15 |
| 1-5 Label Printer Registration..... | 17 |
| 1-6 Port range setting..... | 20 |

1. BIXOLON OPOS Setup

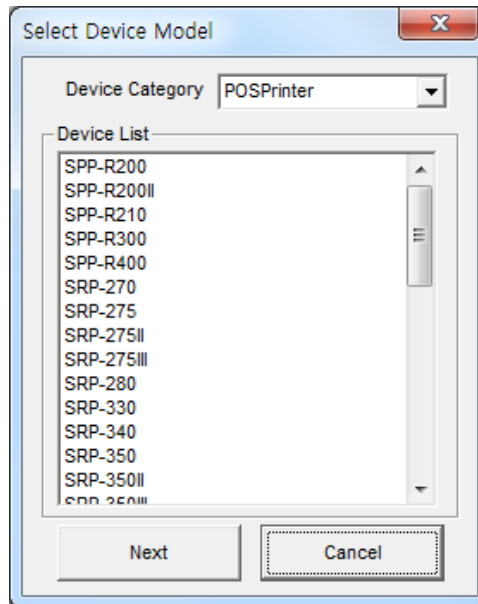
After BIXOLON OPOS Driver installation, execute “BIXOLON OPOS Setup” to register or configure devices.

- * “BIXOLON OPOS Setup” that is located in.
- * Start> Programs> BIXOLON OPOS Driver> “OPOS SETUP UTILITY”
- * When OPOS SETUP UTILITY runs, the main screen appears.



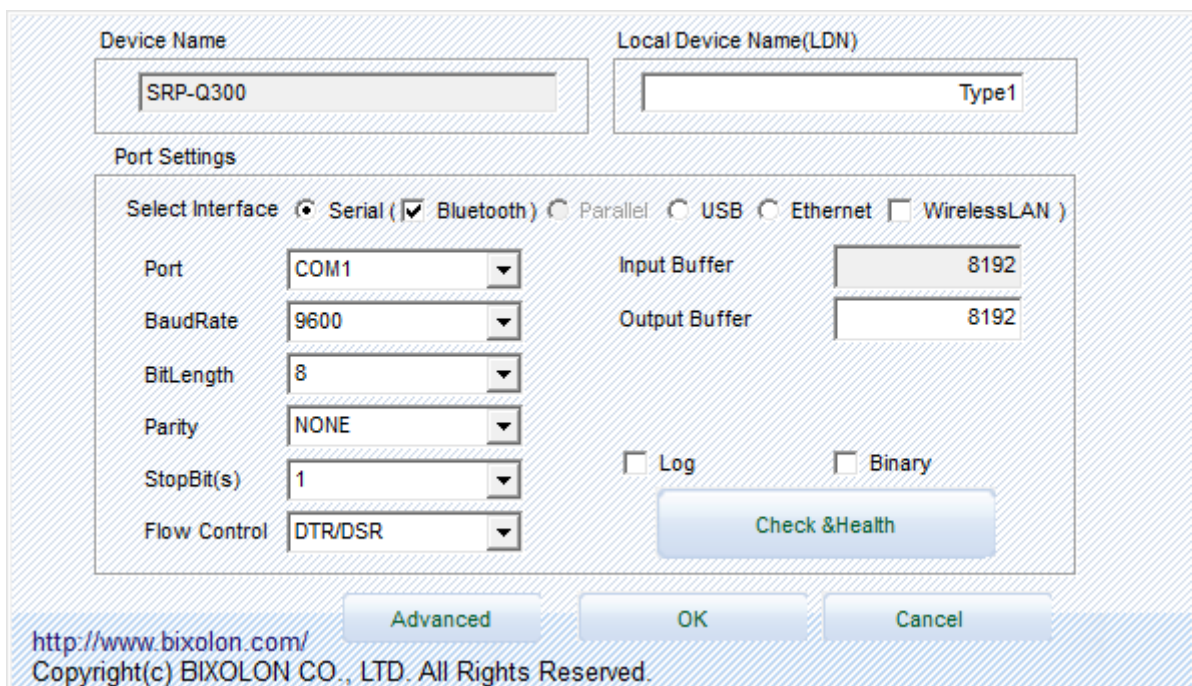
1-1 POSPrinter Registration

1) Click “Add Device” button.



2) Select “POSPrinter” in Device Category.

3) Select the desired printer model from the Device List and click the "NEXT" button.



4) Set the communication environment of the connected printer and click “OK” button.



Note

- Please check the 'Log' and 'Binary' checkbox when it's necessary only. Otherwise Hard Drive capacity will be lack of containing other files due to the 'Log' and 'PRN' checkbox function.
- OPOS log files can be found in the following locations.
 - * **Windows XP**
=> C:\Program Files\OPOS\BIXOLON OPOS DRIVER\Log
 - * **VISTA and later - user account**
=> C:\users\<accounts name>\AppData(hidden folder)\Local\VirtualStore\Program Files\OPOS\BIXOLON OPOS DRIVER\Log
 - * **VISTA and later - administrator account**
=> C:\Program Files\OPOS\BIXOLON OPOS DRIVER\Log

5) Click "Advanced" button to set values related to advanced settings.

6) Set Image Print options and Default font, Characterset, Thai Combination, International charset, etc.



Note

If the settings of default font, charset, international charset, etc. are overlapped, the settings of the program are applied first.

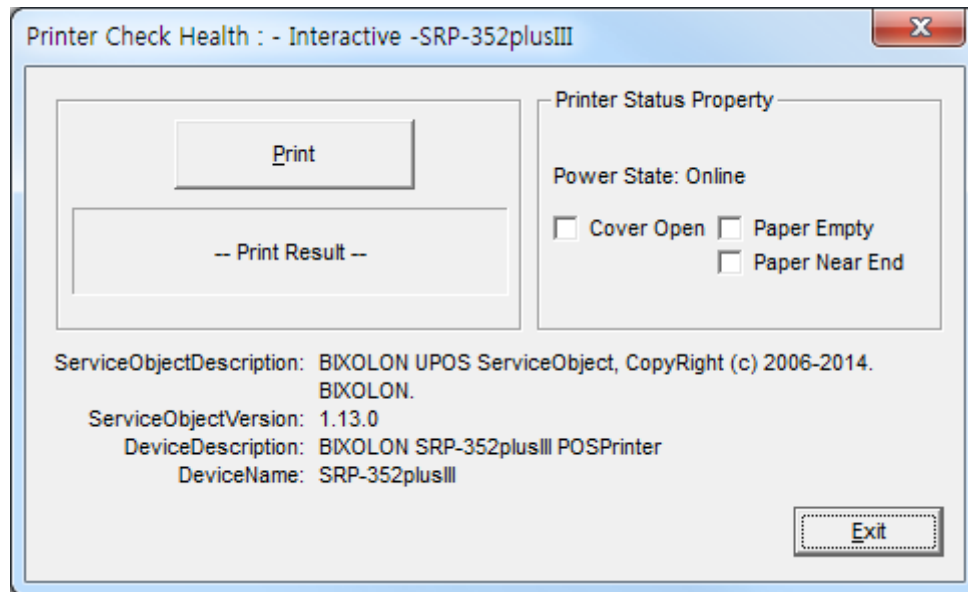
7) It is possible to adjust the brightness of an image, and to select image-processing options. Click "Save" button to save the values.

Note

- The image processing options can only be applied to "PrintBitmap" function.
- Garyscale printing is available on SRP-330II, 332II, 350plusIII, 352plusIII, F310II, F312II, F313II, 380, 382, S300, Q300, Q302 supported.

- 8) If the "CheckHealth" button is selected and the following screen is displayed, communication with the printer is normally connected.

<POSPrinter CheckHealth Dialog >



| Item | Description |
|--|--|
| Logical Device Name (LDN) [Edit Box] | The device can be used with the new LDN value. |
| Port [Drop List Combo Box] | Port setting |
| Bits per second [Drop List Combo Box] | If serial port is used, set Baudrate. |
| But Length [Drop List Combo Box] | If serial port is used, set Bit Length |
| Parity Bits [Drop List Combo Box] | If serial port is used, set Parity Bit |
| Stop Bits [Drop List Combo Box] | If serial port is used, set Stop bit |
| Handshake [Drop List Combo Box] | If serial port is used, select Handshake type. |
| Input Buffer (byte) [Edit Box] | Select the input buffer size. (32 to 8192) |
| Output Buffer (byte) [Edit Box] | Select the input buffer size. (32 to 4096) |
| CheckHealth | Summon the device's CheckHealth (Level = OPOS_CH_INTERACTIVE) function. (This function can check the status of the printer.) |
| Apply or OK [Button] | Saves the current setting. |
| Cancel [Button] | Exit without saving the current setting. |

1-2 CashDrawer Registration

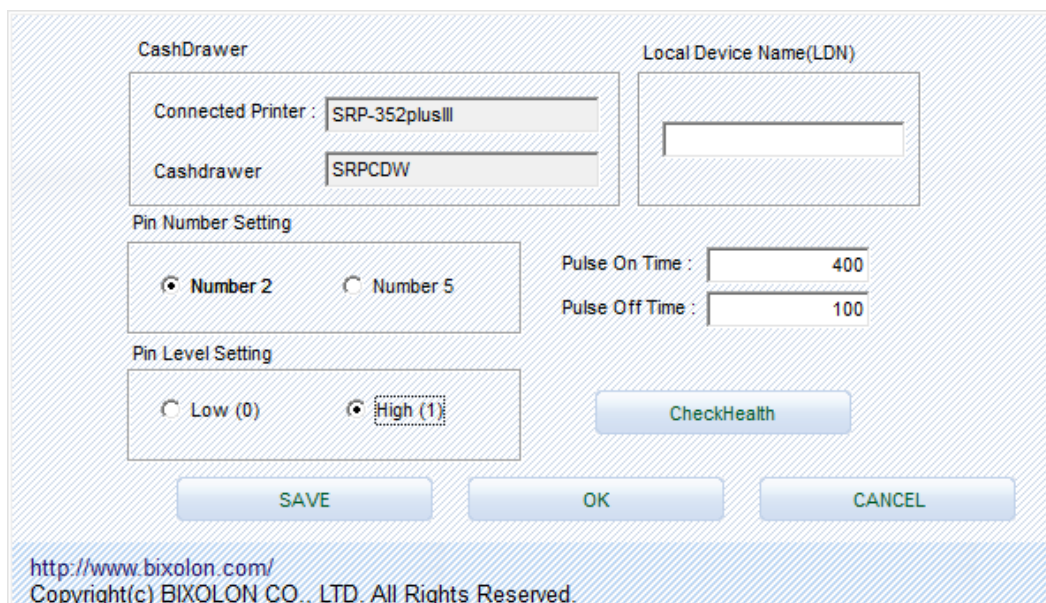
- 1) Click “Add CashDrawer” button.
- 2) From the connected printer list, select the desired printer with CashDrawer.



Note

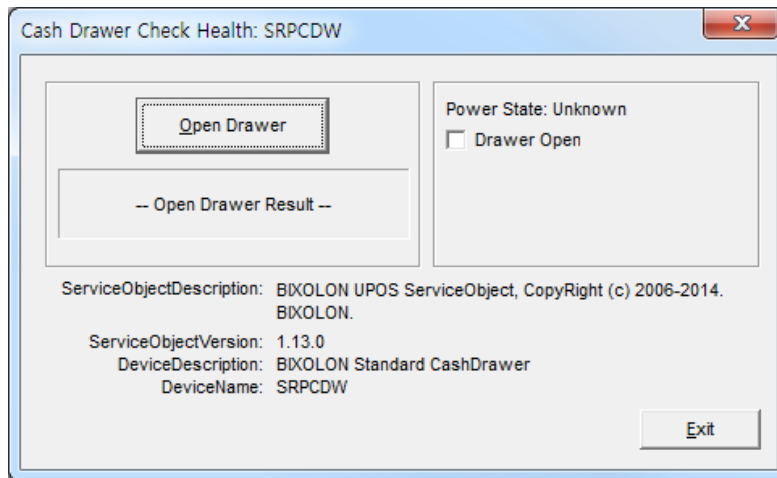
If the Cashdrawer connected printer is not listed, add the printer first.

- 3) Set up CashDrawer and click “SAVE” or “OK” button.



- 4) If "CheckHealth" button is selected and the following screen is displayed, communication with CashDrawer is normally connected.

<CashDrawer CheckHealth Dialog >



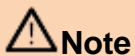
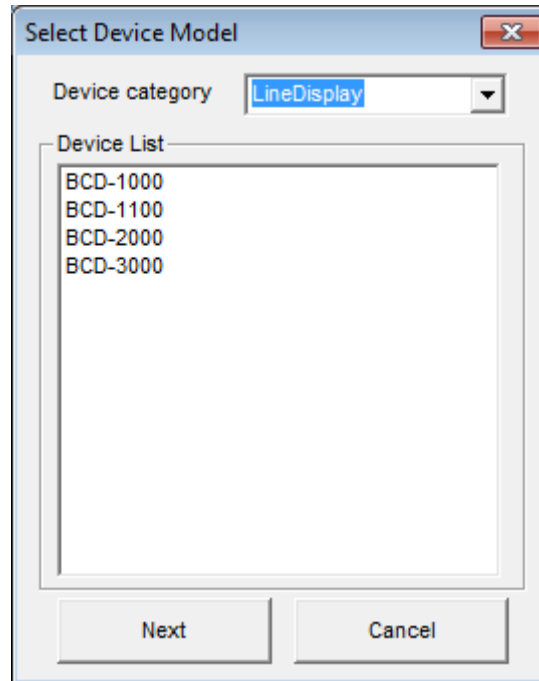
Note

- If the cash drawer is not open after selecting the button of Open Drawer, it is necessary to change 'Pin Number Setting' on device circumstance setting of the cashdrawer.
- You shall adjust the Pin level setting, if the cashdrawer status changed from 'open' to 'close'.

| Item | Description |
|----------------|--|
| Pin Number | Set the pin number of cashdrawer output signal connector. (default: 2) |
| Open Level | Set the closed state signal of the cashdrawer. (default: Low) |
| Pulse ON time | Set the ON time of the output signal. (default: 100 ms) |
| Pulse OFF time | Set the OFF time of the output signal. (default: 400 ms) |
| CheckHealth | Summon the device's CheckHealth (Level = OPOS_CH_INTERACTIVE) function. (This function can check the status of the cashdrawer. |

1-3 LineDisplay Registration

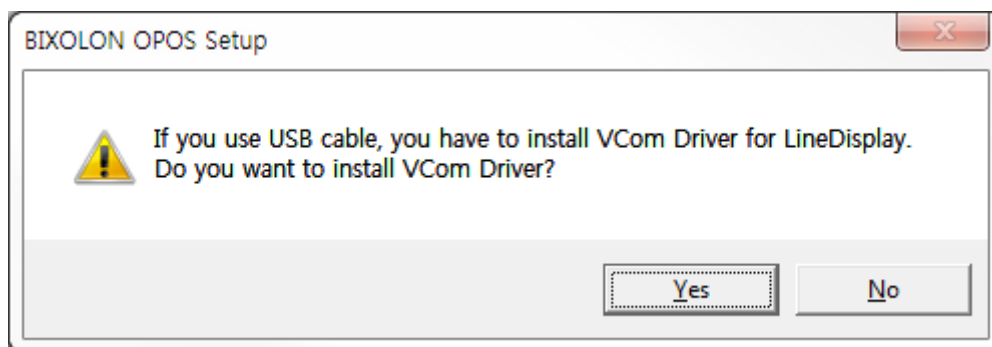
- 1) Click "Add Device" button.
- 2) Select "LineDisplay" in Device Category.



Note

BCD-2000K is the compatible mode of BCD-2000.
It is possible to set compatibility mode by Customer Display Utility.

- 7
- 3) Select LineDisplay model and click "NEXT" button.
- 4) If BCD-2000 or BCD-3000 is selected and BCD VCom Driver is not installed, the following message appears. Select "Yes" to install the BCD VCom Driver.



Caution

When connecting using USB, BCD VCom Driver should be installed.

5) After setting the communication type and device of LineDisplay, click "OK" button.

Device Name: BCD-2000

Local Device Name(LDN):

Port Settings

Select Interface: ☒ Serial (☐ Bluetooth) ☐ Parallel ☐ USB ☐ Ethernet ☐ WirelessLAN)

Port: COM1

BaudRate: 9600

BitLength: 8

Parity: NONE

StopBit(s): 1

Flow Control: DTR/DSR

Input Buffer: 8192

Output Buffer: 8192

☐ Log ☐ Binary

Check & Health

OK Cancel

<http://www.bixolon.com/>
Copyright(c) BIXOLON CO., LTD. All Rights Reserved.

6) The BCD-3000 can be connected through the SRP-Q300 or SRP-Q302 printer. After checking "Through connected printer", select BCD-3000 connected printer from the list.

Device Name: BCD-3000

Local Device Name(LDN):

Port Settings

Select Interface: ☒ Serial (☐ Bluetooth) ☐ Parallel ☐ USB ☐ Ethernet ☐ WirelessLAN)

Port: COM1

BaudRate: 9600

BitLength: 8

Parity: NONE

StopBit(s): 1

Flow Control: DTR/DSR

Input Buffer: 8192

Output Buffer: 8192

☒ Through connected printer

SRP-Q300

☐ Log ☐ Binary

Check & Health

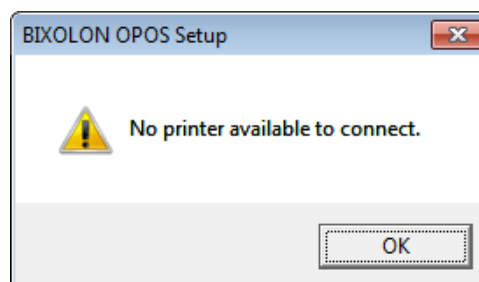
OK Cancel

<http://www.bixolon.com/>
Copyright(c) BIXOLON CO., LTD. All Rights Reserved.

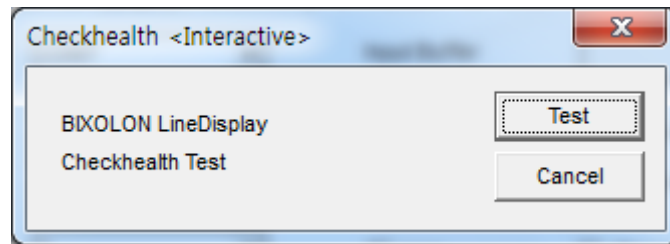


Note

If "Through connected printer " is checked then the following screen is displayed, add the printer first.

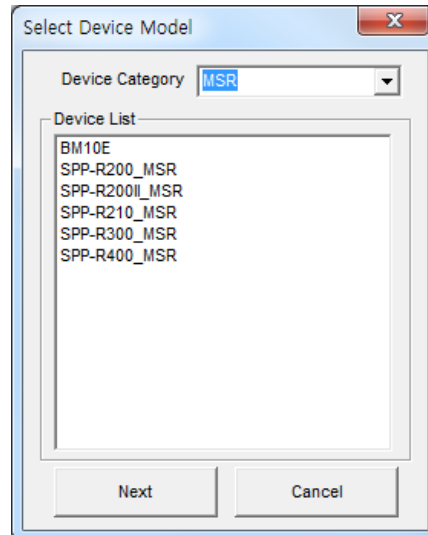


- 7) If "CheckHealth" button is selected and the following screen is displayed, communication with LineDisplay is normally connected.

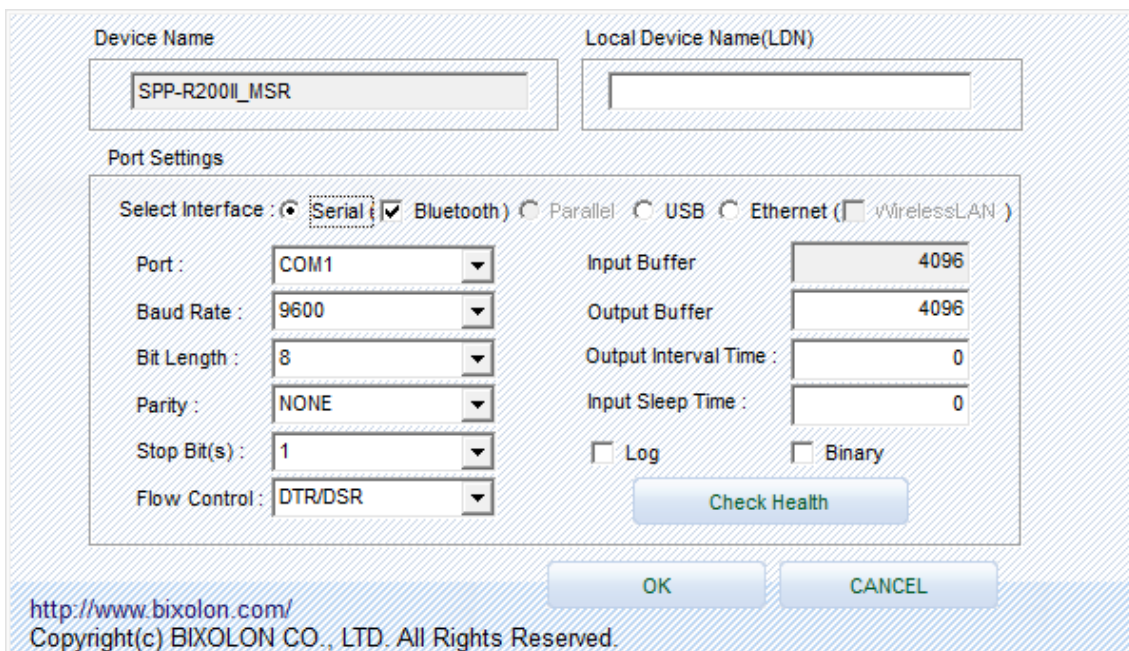


1-4 MSR Registration

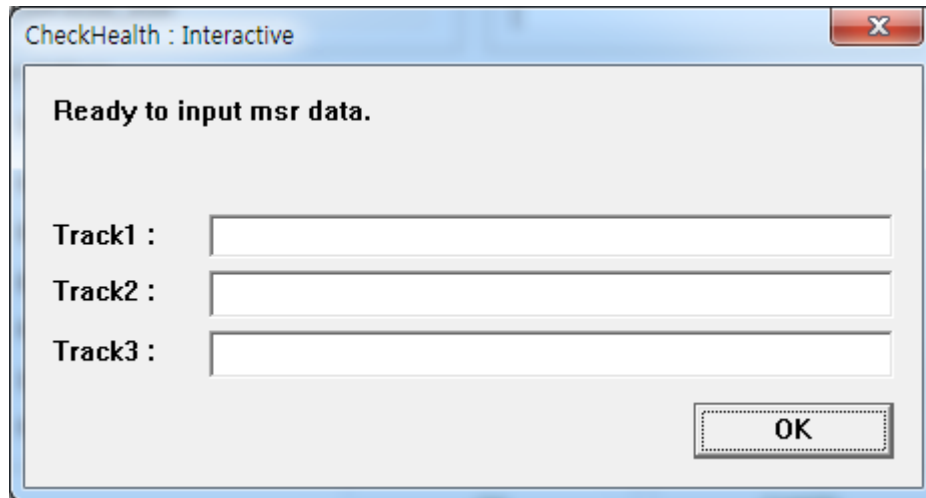
- 1) Click "Add Device" button.
- 2) Select "MSR" in Device Category list.



- 3) Select MSR model and click "NEXT" button.
- 4) After setting the communication type and device of MSR, click "OK" button.



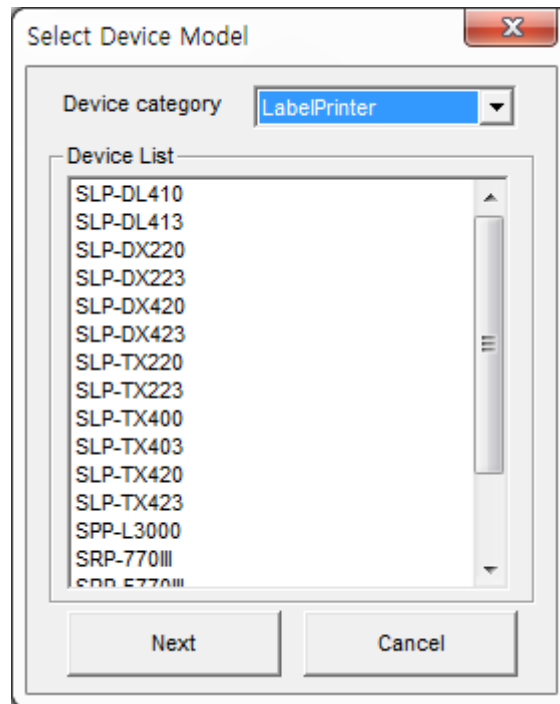
- 5) The following screen is displayed after clicking “CheckHealth” button.
This implicates that communication with MSR is successful. When the card is swiped, please check the screen whether the card information is displayed correctly.



The image shows a Windows-style dialog box titled "CheckHealth : Interactive". The dialog has a standard title bar with a close button (X) in the top right corner. The main content area is light gray and contains the text "Ready to input msr data." in bold. Below this text, there are three input fields, each preceded by a label: "Track1 :", "Track2 :", and "Track3 :". Each label is followed by a white rectangular text box. In the bottom right corner of the dialog, there is an "OK" button with a dotted border.

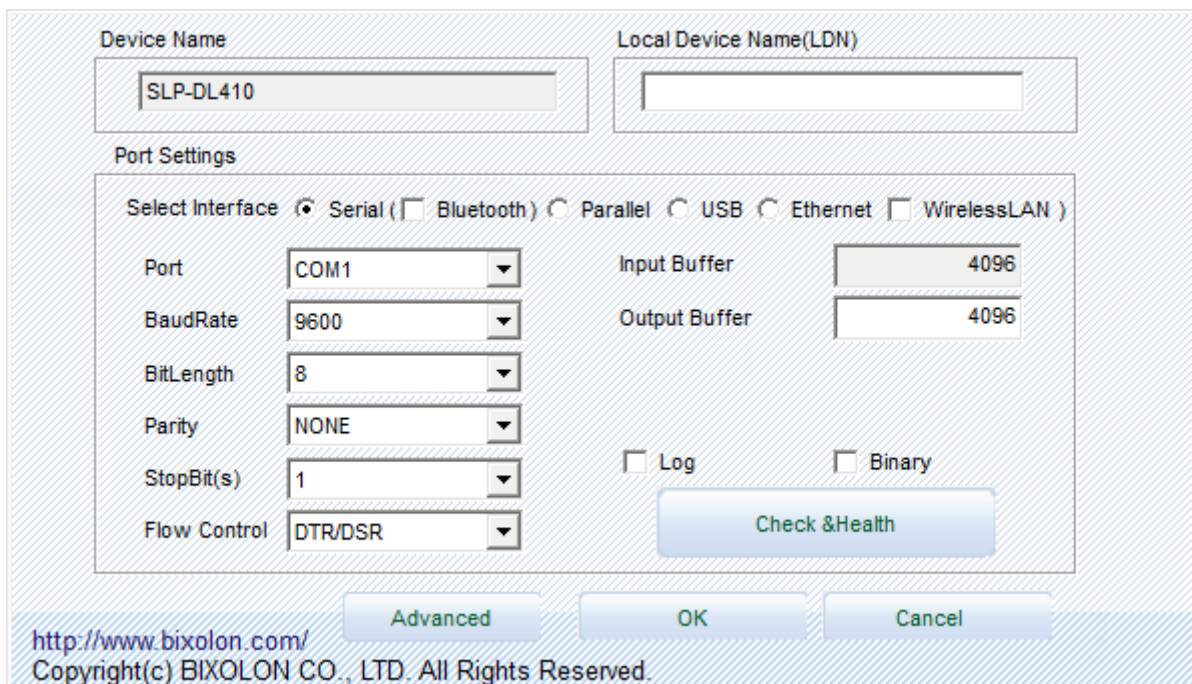
1-5 Label Printer Registration

1) Click "Add Device" button.



2) Select "LabelPrinter" in Device Category.

3) Select the desired printer model from the Device List and select the "NEXT" button.



Device Name: SLP-DL410

Local Device Name(LDN):

Port Settings

Select Interface: ☒ Serial (☐ Bluetooth) ☐ Parallel ☐ USB ☐ Ethernet ☐ WirelessLAN)

Port: COM1

BaudRate: 9600

BitLength: 8

Parity: NONE

StopBit(s): 1

Flow Control: DTR/DSR

Input Buffer: 4096

Output Buffer: 4096

☐ Log ☐ Binary

Check & Health

Advanced OK Cancel

<http://www.bixolon.com/>
Copyright(c) BIXOLON CO., LTD. All Rights Reserved.

- 4) Set the communication environment of the connected printer and click “SAVE” button.
- 5) Click “Advanced” button to set values related to advanced settings.

The screenshot displays the OPOS Driver configuration window with the following settings:

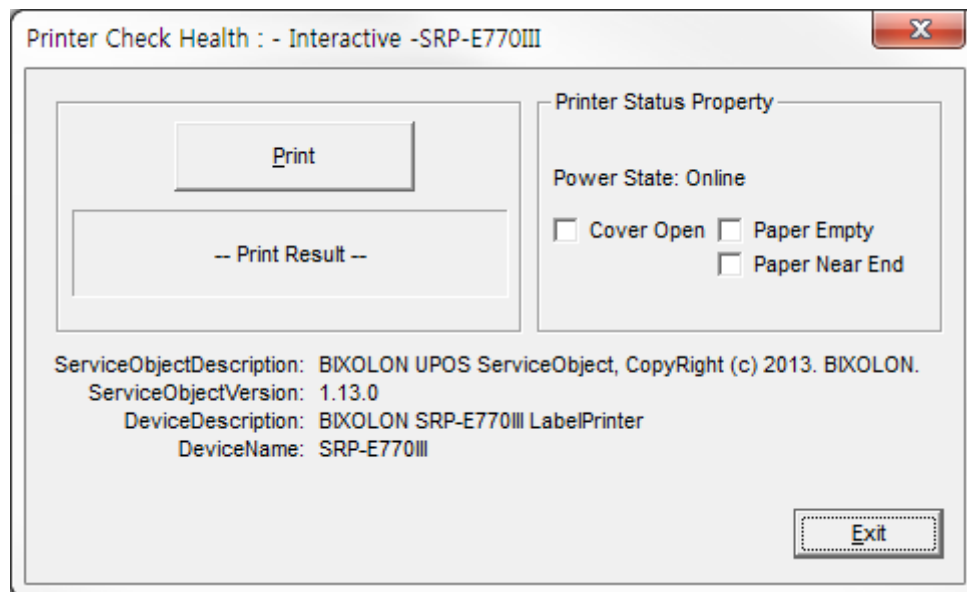
| Section | Parameter | Value | Range/Unit |
|----------------------|-------------------|--------------------------|--------------|
| Basic Settings | Print Type | Direct thermal | Dropdown |
| | Print Orientation | Bottom to Top | Dropdown |
| | Media Type | Auto | Dropdown |
| | Operation Mode | Tear Off | Dropdown |
| Tear Off Settings | TearOff adjust | 0 | (-100 - 100) |
| | Cutter Period | 1 | (1 - 10) |
| Paper Settings | Paper Width | 832 | dots |
| | Paper Length | 1225 | dots |
| | Left margin | 0 | dots |
| | Top Margin | 0 | dots |
| Performance Settings | Speed | 4 | (0 - 12) |
| | Density | 15 | (1 - 20) |
| | HRI Size | 1 | (1 - 4) |
| | RightToLeft | <input type="checkbox"/> | Checkbox |

At the bottom of the window, there are three buttons: **Default**, **SAVE**, and **CANCEL**.

- 6) Set label printer and label paper configuration.

7) If the "CheckHealth" button is selected and the following screen is displayed, communication with the printer is normally connected.

<POSPrinter CheckHealth Dialog >



| Item | Description |
|--|--|
| Logical Device Name (LDN) [Edit Box] | The device can be used with the new LDN value. |
| Port [Drop List Combo Box] | Port setting |
| Bits per second [Drop List Combo Box] | If serial port is used, set Baudrate. |
| But Length [Drop List Combo Box] | If serial port is used, set Bit Length |
| Parity Bits [Drop List Combo Box] | If serial port is used, set Parity Bit |
| Stop Bits [Drop List Combo Box] | If serial port is used, set Stop bit |
| Handshake [Drop List Combo Box] | If serial port is used, select Handshake type. |
| Input Buffer (byte) [Edit Box] | Select the input buffer size. (32 to 8192) |
| Output Buffer (byte) [Edit Box] | Select the input buffer size. (32 to 4096) |
| CheckHealth | Summon the device's CheckHealth (Level = OPOS_CH_INTERACTIVE) function. (This function can check the status of the printer.) |
| Apply or OK [Button] | Saves the current setting. |
| Cancel [Button] | Exit without saving the current setting. |

1-6 Port range setting

- If port number supported by system does not appear when setting up device's communication, set the range of port number from the screen below that appears by selecting the "Set Port Range" button on the main screen of Setup Utility.

Serial ports Range (1 - 50)

Parallel ports Range (1 - 10)

Default SAVE CANCEL

<http://www.bixolon.com/>
Copyright(c) BIXOLON CO., LTD. All Rights Reserved.



Note

If select the port that the system doesn't have, the device won't operate.

Copyright

© BIXOLON Co., Ltd. All rights reserved.

This user manual and all property of the product are protected under copyright law. It is strictly prohibited to copy, store, and transmit the whole or any part of the manual and any property of the product without the prior written approval of BIXOLON Co., Ltd. The information contained herein is designed only for use with this BIXOLON product. BIXOLON is not responsible for any direct or indirect damages, arising from or related to use of this information.

- The BIXOLON logo is the registered trademark of BIXOLON Co., Ltd.
- All other brand or product names are trademarks of their respective companies or organizations.

BIXOLON Co., Ltd. maintains ongoing efforts to enhance and upgrade the functions and quality of all our products.

In the following, product specifications and/or user manual content may be changed without prior notice.

Caution

Some semiconductor devices are easily damaged by static electricity. You should turn the printer “OFF”, before you connect or remove the cables on the rear side, in order to guard the printer against the static electricity. If the printer is damaged by the static electricity, you should turn the printer “OFF”.

Revision history

[illegible]